

AI Tools for KIPO's IP Administration

Gyudong HAN

gdhan@korea.kr

Information System Division
Korean Intellectual Property Office (KIPO)

WIPO ICT Leadership Dialogue (WILD)
Theme 7: AI tools for IP businesses
April 15, 2025



Korean Intellectual
Property Office

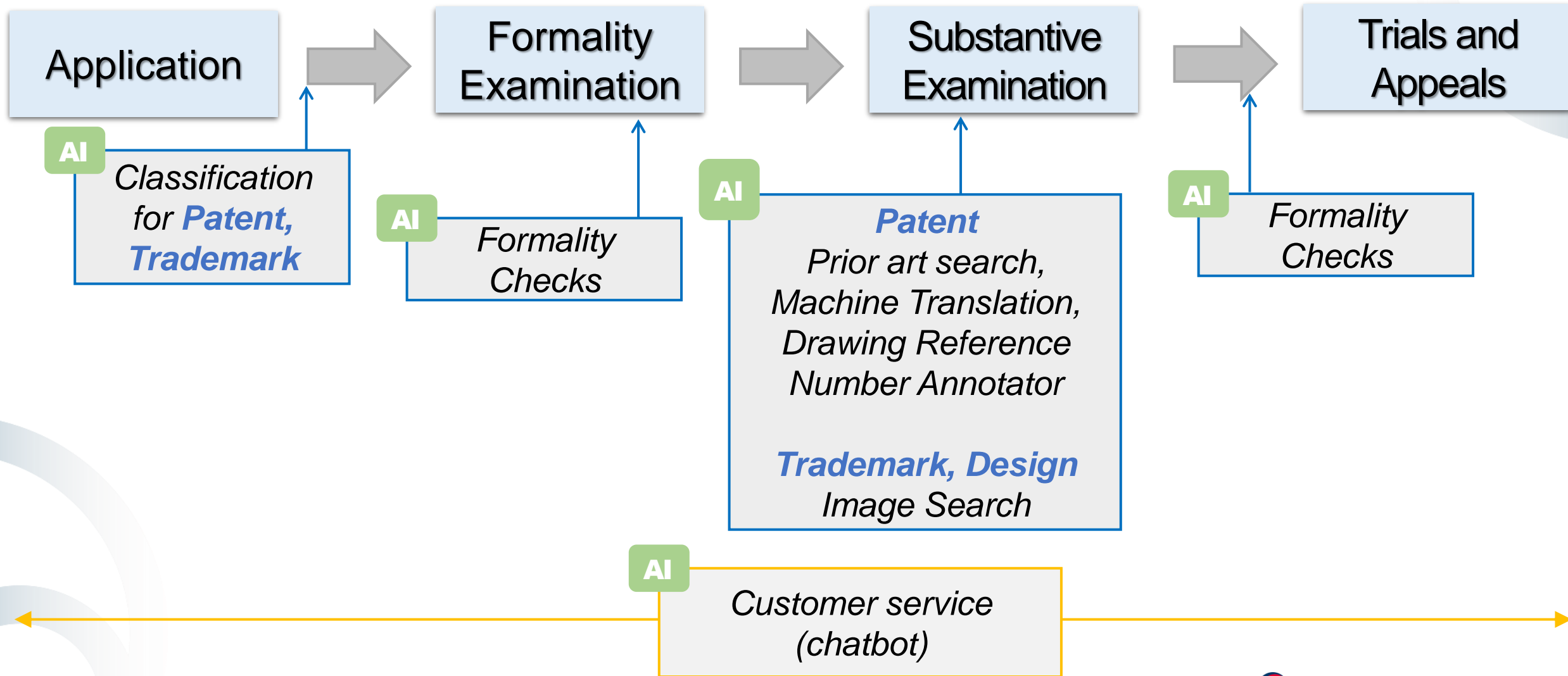
KIPO's IT system: KIPOnet

Fully digitized all IP administrative processes, including filing, formality checks, examination, registration, trials and appeals, and gazette publication.



- ▶ Paperless
- ▶ E-Filing
- ▶ 24/7 Non-stop services
- ▶ Work-from-home system
- ▶ Cloud-based system
- ▶ Start applying AI

AI System Overview (1)



AI System Overview (2)

Search

- AI-based Patent Search ('22)
- Trademark Image Search ('21)
- Design Image Search ('21)

Classification

- AI Patent CPC Classification ('22)
- AI Trademark Goods & Services Classification ('24)

Machine Translation

- English ('19)
- Japanese ('22)
- Chinese ('20)
- French, German, Russian ('20)

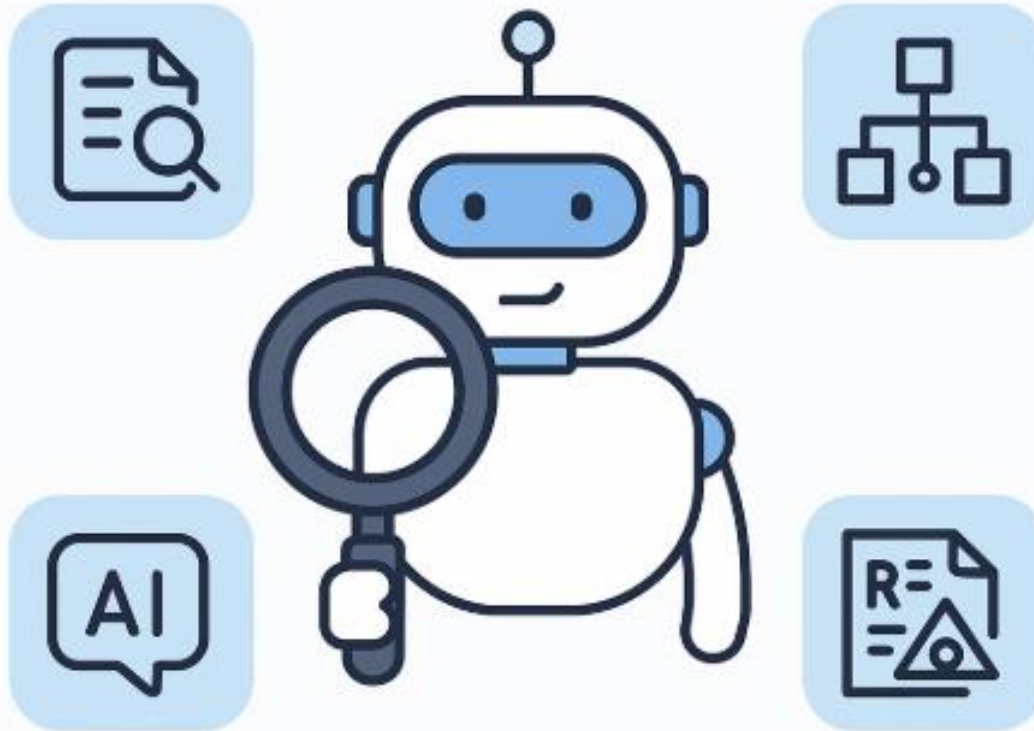
Chatbot

- Chatbot Service for Call Center Agents ('21)
- Chatbot Service for the Public ('22)

Others

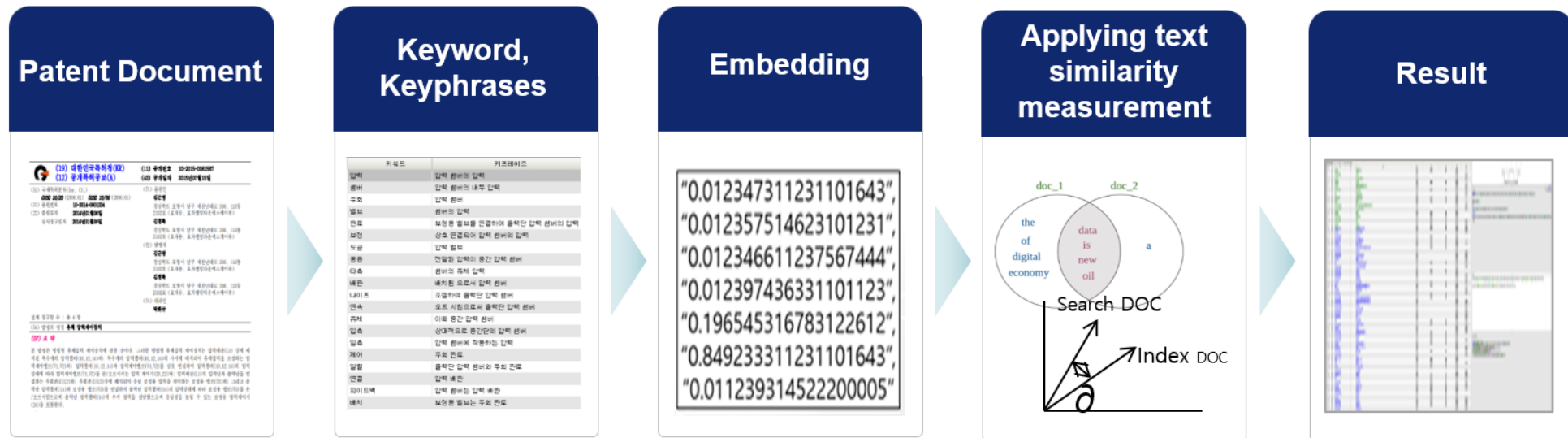
- Patent Drawing Reference Number Annotator ('19)
- AI-based Trial Formality Examination System ('24)

Key AI Services



AI based Patent Search System

- ❖ Extract keywords & key-phrases from patent application documents
- ❖ Compare embeddings and find similar patent documents
- ❖ Display them in a list, starting from the most relevant ones.



Trademark Image Search System

Level 1 (whole vs whole)

Query



Result



Retrieve figurative TMs generally similar to the query image

Level 2 (whole vs part)



Result



Retrieve figurative TMs that include parts of the query image

Level 3 (part vs part)

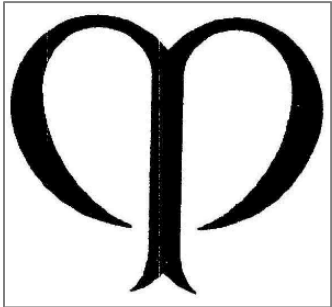


Result



Retrieve figurative TMs that are partially similar to parts of the query image

Trademark Image Search System



40-0464245

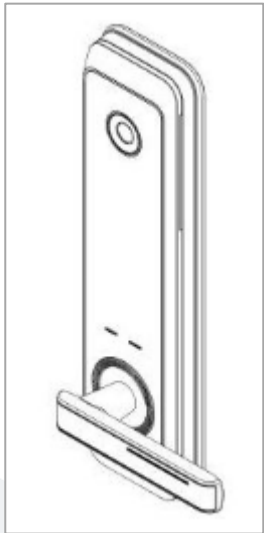
whole vs whole



whole vs part

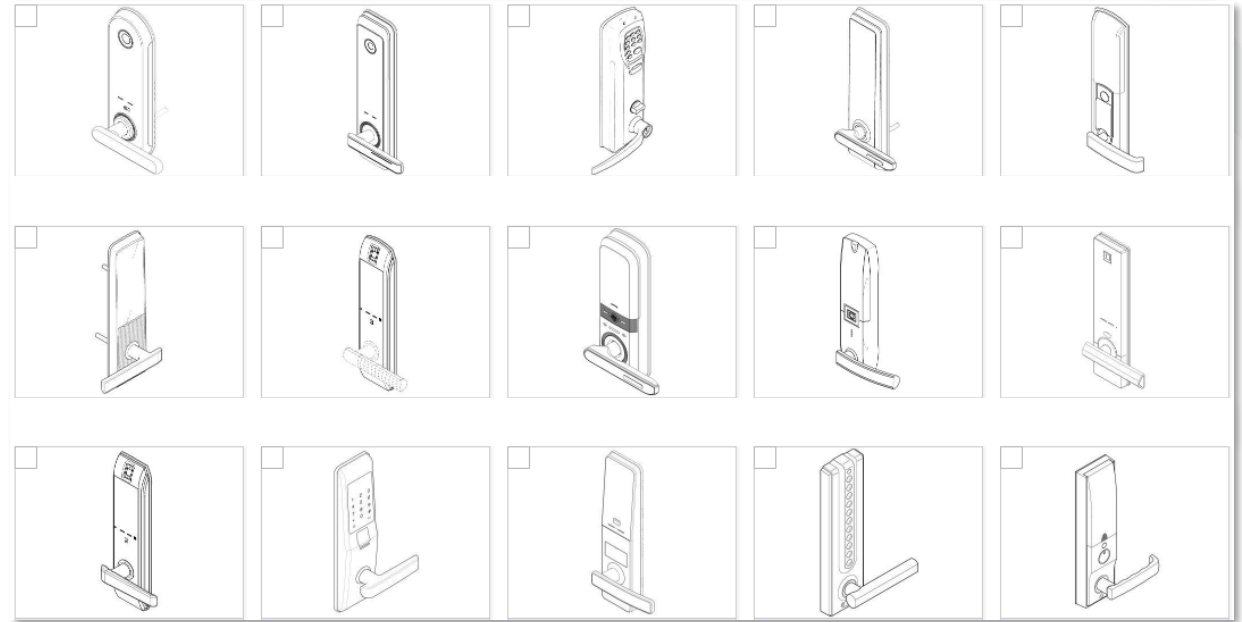


Design Image Search System

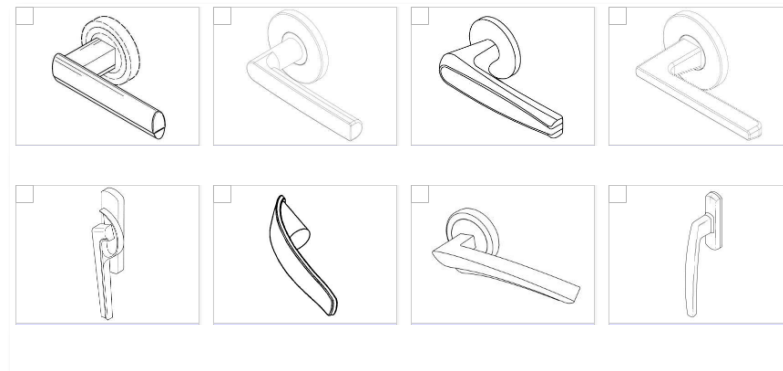


30-1004255

whole vs whole



part vs part



Design Image Search System



30-0661535

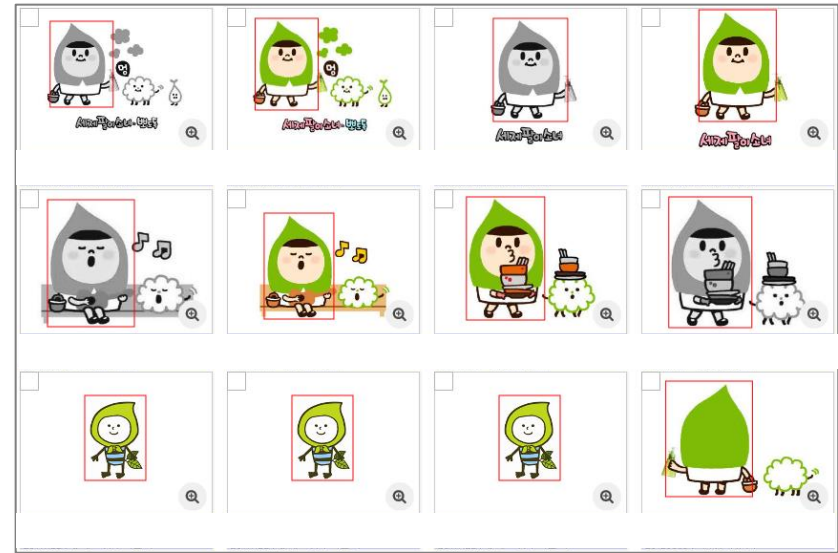
whole vs whole



*(2D Design,
Figurative Mark Image Search)*

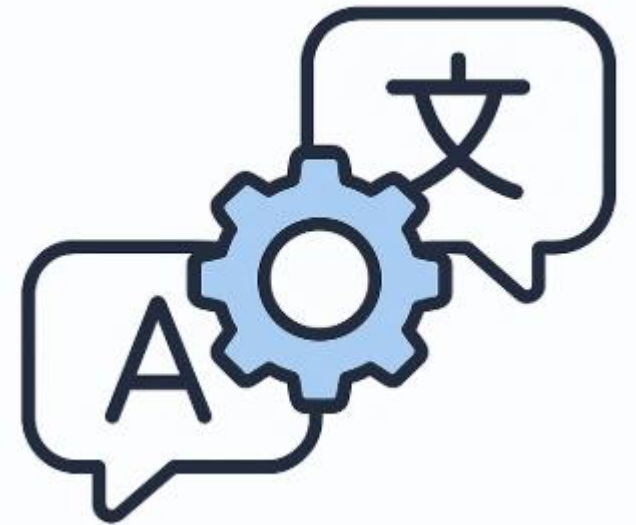


part vs part



Machine Translation

- ❖ Used for two purposes: (1) real-time translation and (2) large-scale translation to support a Korean-based patent search system.
- ❖ Developed and operated through various approaches, including:
 - ✓ Building in-house translation engines
 - ✓ Buying commercial translation engines
 - ✓ Utilizing external engines through Open-API
 - ✓ Adopting WIPO's translation engines



- 출원서양식**

 - 수리대상건
 - 발명수리대상건
 - 보정대상건
 - 반려대상건
 - 결정회수/반려건
 - 보류건

---서류선택---

출원번호

10-201-1143

10-201-3006

30-201-3006

30-201-3006

40-20-3006

10-201-31431

30-201-30111

10-201-00725

10-201-00725

10-201-00725

12345

Results of formality check by machine

Applications to accept
Applications to revise
Applications to reject

Formality check of patent application

1. whether the fee is paid?

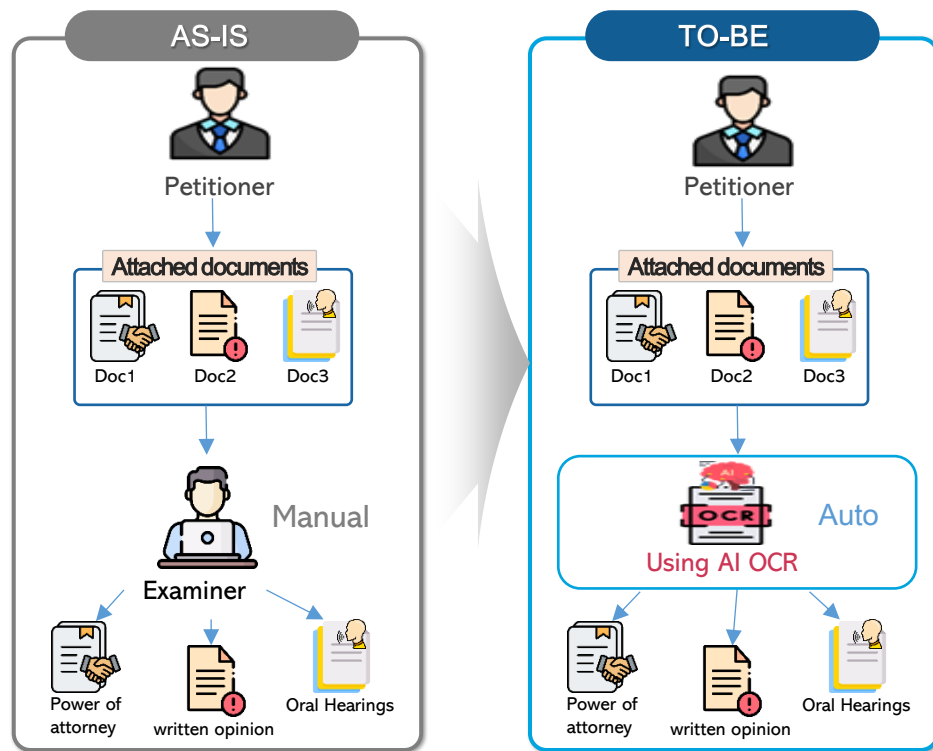
2. whether applicant's information is right?

3. whether agent's information is accurate?

Deep Learning based Trial Formality Examination System

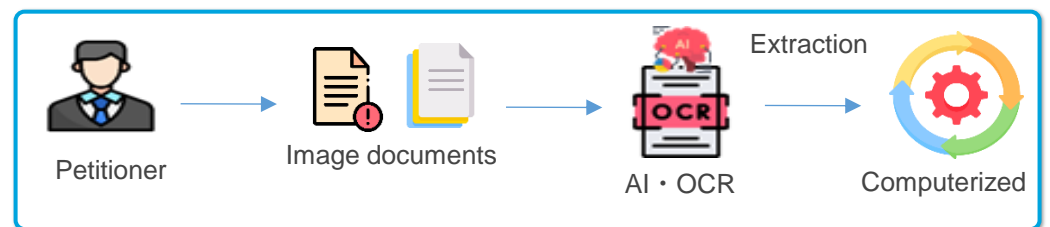
Reclassification of attached documents using AI OCR

- Automatic reclassification of attachments using AI OCR

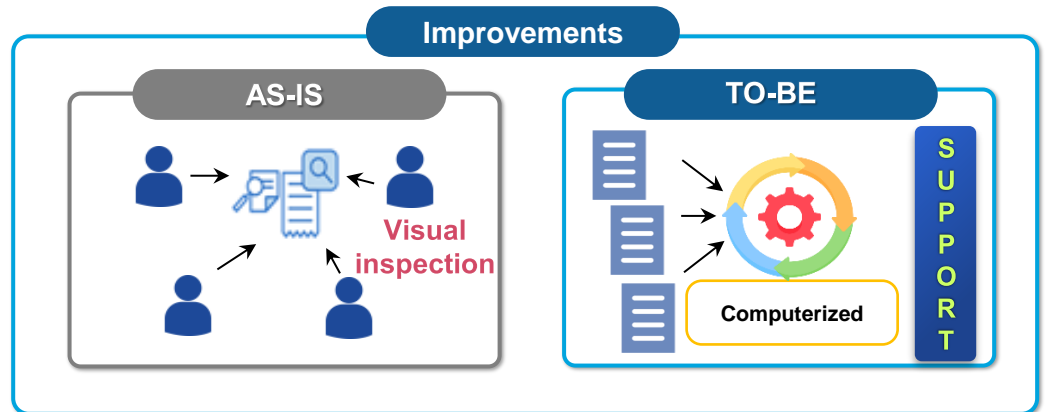


Establishment of an automated computerized exam system

- Content extraction from image attachments using AI OCR



- Apply extracted content to a computerized system



AI Language Model

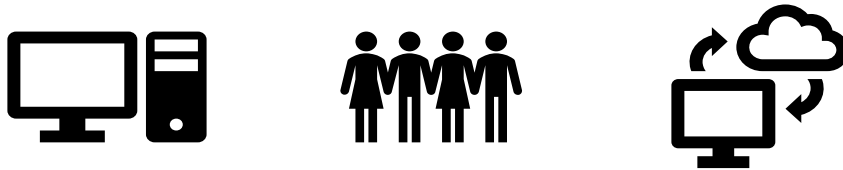
- ❖ Efforts are underway to assess the usefulness of AI language models
 - ✓ Cooperating with private companies to build Patent-specific LLM, Chatbot for patent examiners
 - ✓ Exploring the effectiveness of private companies' language models for examination



Final thoughts

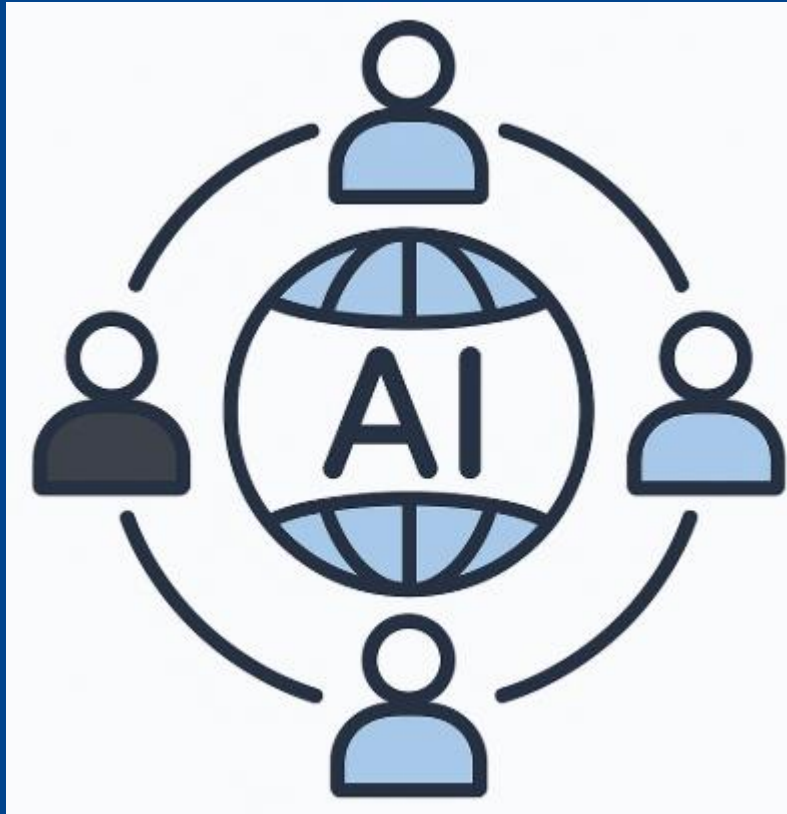
Things to consider for AI

- AI is not a goal in itself, but rather a tool to enhance the efficiency of IP office administration
 - ▶ Evaluation of necessity through cost/benefit is needed
- Operating IT systems require substantial costs.
 - ▶ AI systems incur additional costs (e.g., GPU, AI expert)



- Therefore, IP offices need to assess necessity, usability, and potential benefits of AI
 - ▶ IP administration needs efficient tools. In the long run, **using AI will be an inevitable path.**





Thank you!